



NANCY HILL VIEW

Project by Sarsan Aawishkar Properties

*The Exemplar of Exquisite Living
For The Rare Ones*



Windows & Grills

- Granite framing on all sides of windows.
- Three track powder coated aluminium sliding windows with mosquito mesh.
- Safety grills for windows.
- Glass louvers with exhaust fan provision in washrooms.
- MS railings for balcony.
- Sliding doors for balconies.

Doors and Door Frames

- Elegant designer laminated main door & main door frame.
- Both side laminated doors & door frames for bedrooms & washrooms.
- Premium accessories & fixtures for doors in all the rooms.
- Aluminium sliding doors in living and bedroom balconies with mosquito mesh.

Structure

- Earthquake resistance RCC framed structure

Wall Finish

- Textured Mivan finished concrete walls.
- Internal wall & ceiling in gypsum finish.

Electrical

- Concealed wiring with modular switches – (GM or equivalent brand).
- TV points in living room & bedrooms.
- Provision for DTH, Broadband & Inverter Point.
- AC point in living room & bedrooms.
- Electrical exhaust fan point in washrooms.
- Separate MCB / ELCB for each flat.

Plumbing

- Concealed plumbing of CPVC.
- CP fittings of JAQUAR or equivalent brand.
- Sanitary ware of TOTO or equivalent brand.
- Conventional/Chemical water proofing in washrooms, balcony and dry balcony

Flooring

- 800mm*800mm vitrified tiles in full flat.
- 1200mm*600mm anti-skid tiles in washrooms & balcony.
- 7ft high designer dado tiles in washrooms.



Kitchen and Dry Balcony

- Parallel counter granite top kitchen platform with SS sink.
- Designer dado tiles above platform up to lintel level.
- Electrical points for Refrigerator, Microwave & Water Purifier.
- Washing Machine point in dry balcony.
- Additional sink in dry balcony.

Paint

- OBD Paint Internal Finish.
- Semi- Acrylic Paint External Finish.
- Oil Paint for Window Grills.

Special Features

- Digital Lock for main door.
- IP enabled Video Door Phone.
- Fan and tube light in entire flat.
- Water purifier in kitchen.
- USB points in living and master bedroom.
- Geyser in master bathroom.

Common Amenities

- Club House.
- Swimming pool with kids' pool.
- Gymnasium.
- Multipurpose hall on the Podium.
- Party Lawn.

Common Facilities

- Rain water harvesting.
- STP.
- Waste management.
- Solar.
- Power backup for common areas.
- Common Electric Vehicle charging point.
- Lifts (JOHNSON or Equivalent)

ABOUT US

Established in 1996, Nancy Builders and Developers is one of the leading names in real estate development in Pune and Kalyan, two of the most expeditiously developing cities in the country and the state of Maharashtra.

At Nancy, our endeavor has been to create projects that stand out for their focus on uncompromising quality, exceptional design, and world-class experience. We are guided by our vision of bringing to our customers luxurious and thoughtfully designed homes that can become their companions and treasure trove of memories on their life journey. And over the course of nearly four decades, we have been able to build a legacy of trust among our patrons by successfully delivering on our promise through landmark icons of luxury, architecture, and comfort across residential, commercial & organized retail verticals.

While we may have been away from Pune's real estate landscape for the last decade or so, our tryst with this bustling metropolis is far from over. Hence, we are making a grand comeback to the Queen of the Deccan with a suite of new launches to delight our customers who've been waiting patiently for our return.



Near By : Mumbai Highway (NH-48) and Pashan-Sus Road,
Rajiv Gandhi Infotech Park, educational institutions, healthcare facilities, shopping complexes,
malls, sports complex, banks and restaurants. Popular retail cum entertainment avenues
within 7 km include Westend Mall, Reliance Mall, D Mart Baner, Balewadi High Street and Xion Mall
Infosys, Cognizant, Wipro Technologies, Capgemini, Tata Consultancy Services

Contact Us



+9143963963 | www.nancyhillview.com | Sales@nancyhillview.com |

Site Address: S. NO. 53/9, 53/10 (PART), 53/11/1 (PART), BANER, PUNE - 411045.

Maha RERA registration no. P521000046913 of Nancy Hill View – Tower A1.

Available at website: <http://maharera.mahaonline.gov.in>

DISCLAIMER:

The images and other details herein are only indicative. The Developer / Owner reserves the right to change any or all of these in the interest of the development, as per provision of law. Artist's impressions are used to illustrate amenities, specifications, images and other details. Tolerance of +/- 3% is possible in the unit areas on account of design and construction variances. All brands stated are subject to final decision of the project architect. This electronic / printed material does not constitute an offer and/or contract of any type between the Developer / Owner and the recipient. No booking or allotment shall be deemed to have been made on the basis of this electronic / printed material. Any Purchaser / Lessee of this development shall be governed by the terms and conditions of the agreement for sale / lease entered into between the parties, and no details mentioned in this electronic / printed material shall in any way govern such transactions unless as may be otherwise expressly provided in the agreement for sale/lease by the Developer / Owner. The Developer / Owner does not warrant or assume any liability or responsibility for the accuracy or completeness of any information contained herein. Project presently financed by Standard Chartered Bank and NOC / permission of Standard Chartered Bank will be obtained for sale of property, if required. This electronic / printed material has been created keeping in mind the provisions of the Real Estate (Regulation and Development) Act, 2016 (RERA) applicable for projects in Maharashtra. You are required to verify all the details, including area, amenities, services, terms of sales and payments and other relevant terms independently with the Developer sales team only, by physically visiting the project site and the authorised website of RERA. You are requested NOT to visit any unauthorized or unverified website/broker (online / offline) to receive any information about any projects of the Developer and/or its sister concerns.

Location



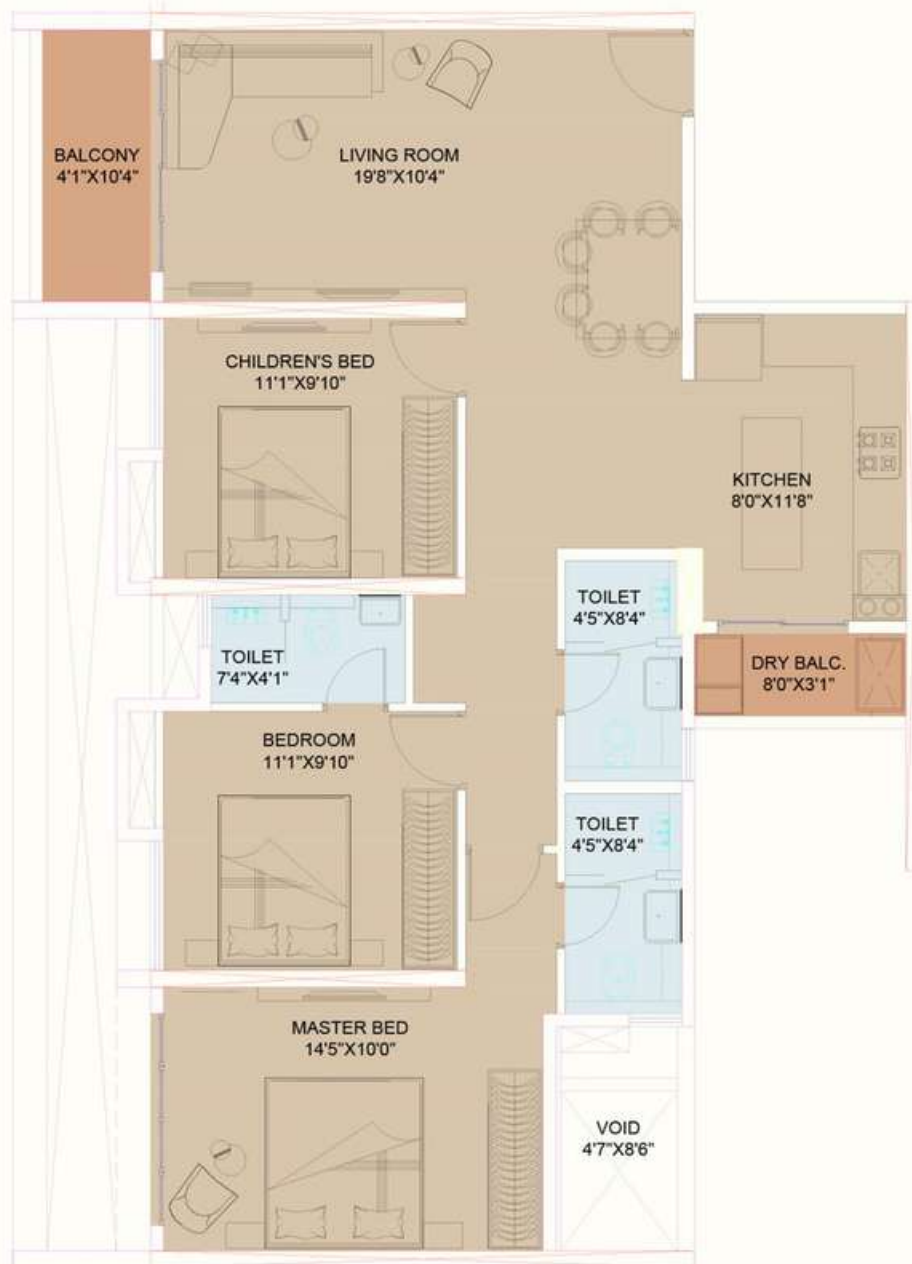
2 BHK Floor Plan



"Area as per RERA. All areas are in sq.mtrs"

Type : 2 BHK	Carpet Area : 69.09	Balcony Area : 10.08 Open/closed	Total Area : 79.17
--------------	---------------------	-------------------------------------	--------------------

3 BHK Floor Plan



"Area as per RERA. All areas are in sq.mtrs"

Type : 3 BHK	Carpet Area : 90.01	Balcony Area : 06.27 Open/closed	Total Area : 96.28
--------------	---------------------	-------------------------------------	--------------------



Address : S. NO. 53/9, 53/10 (PART), 53/11/1 (PART), BANER, PUNE - 411045.

Contact : **7507441100**